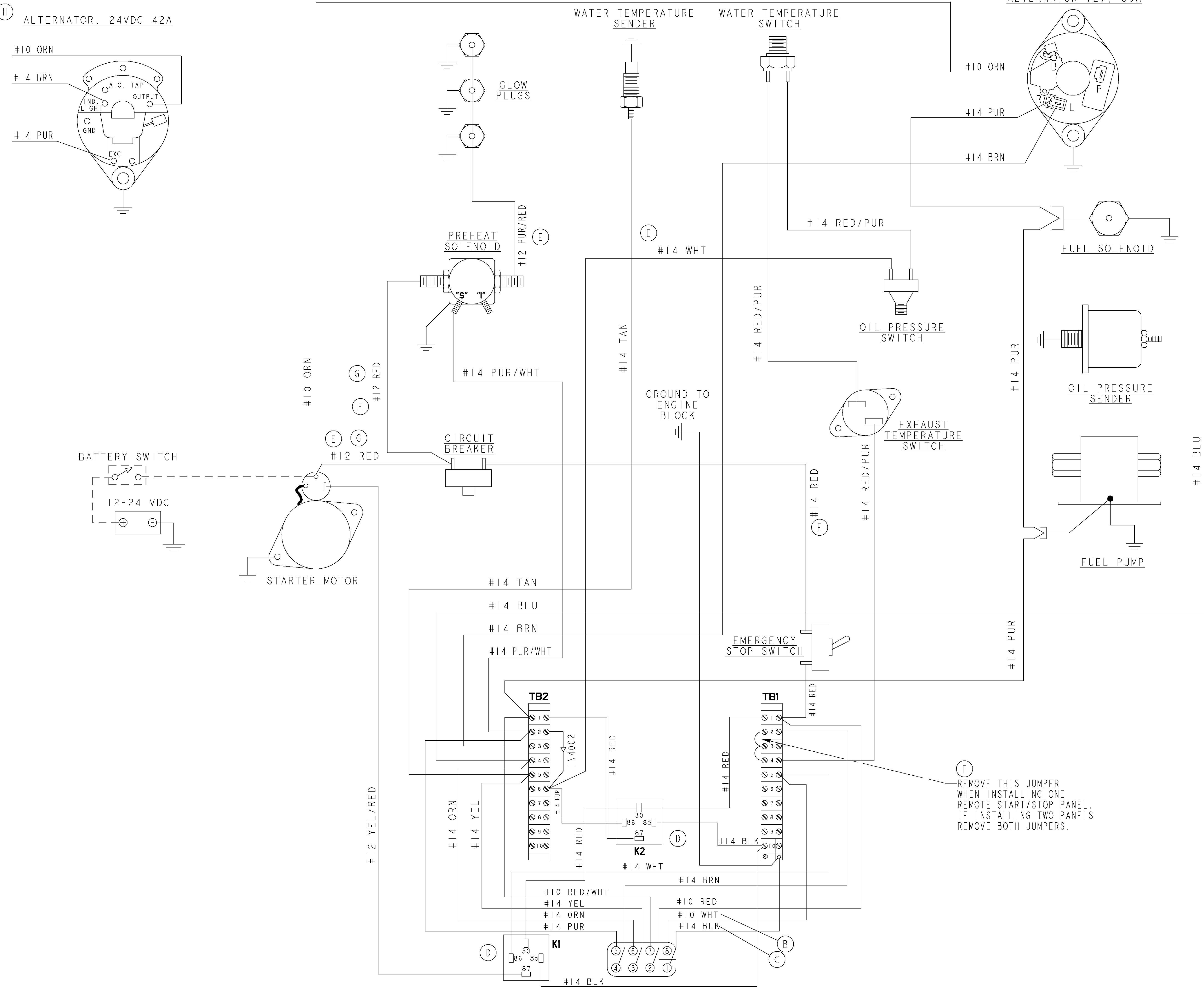
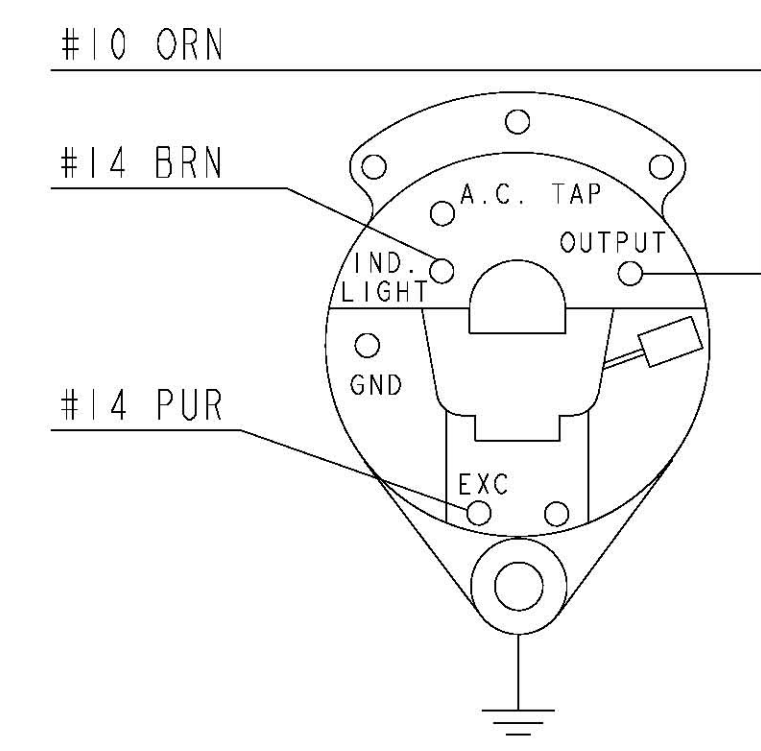
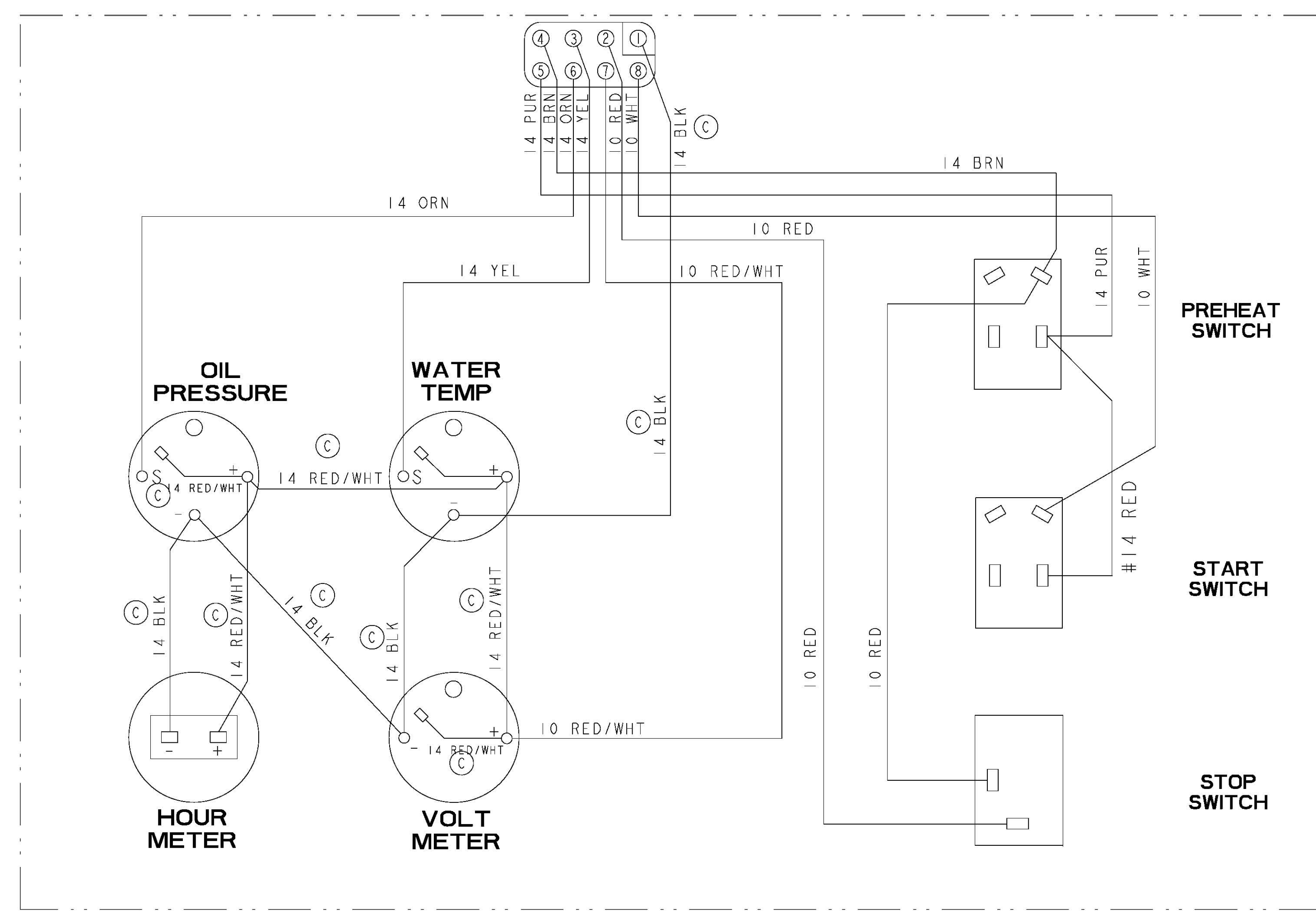


ALTERNATOR, 24VDC 42A

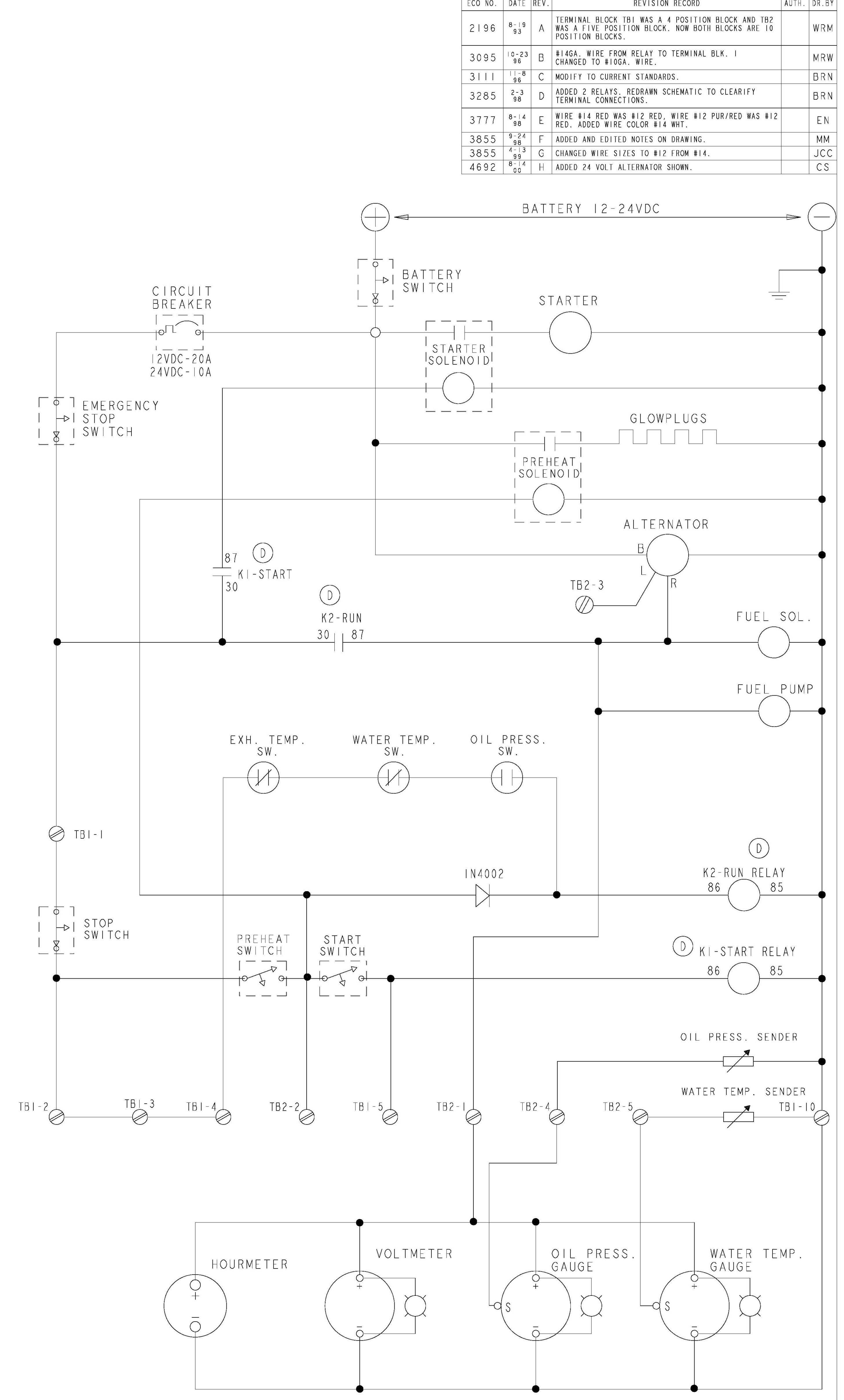


REMOVE THIS JUMPER WHEN INSTALLING ONE REMOTE START/STOP PANEL. IF INSTALLING TWO PANELS REMOVE BOTH JUMPERS.



INSTRUMENT PANEL

ALTERNATOR 12V, 50A



ECO NO.	DATE	REV.	REVISION RECORD	AUTH.	DR. BY
2196	8-19-93	A	TERMINAL BLOCK TB1 WAS A 4 POSITION BLOCK AND TB2 WAS A FIVE POSITION BLOCK. NOW BOTH BLOCKS ARE 10 POSITION BLOCKS.		WRM
3095	10-23-98	B	#14GA. WIRE FROM RELAY TO TERMINAL BLK. 1 CHANGED TO #10GA. WIRE.		MRW
3111	11-28-98	C	MODIFY TO CURRENT STANDARDS.		BRN
3285	2-3-98	D	ADDED 2 RELAYS. REDRAWN SCHEMATIC TO CLARIFY TERMINAL CONNECTIONS.		BRN
3777	6-14-98	E	WIRE #14 RED WAS #12 RED. WIRE #12 PUR/RED WAS #12 RED. ADDED WIRE COLOR #14 WHT.		EN
3855	9-24-98	F	ADDED AND EDITED NOTES ON DRAWING.		MM
3855	1-13-99	G	CHANGED WIRE SIZES TO #12 FROM #14.		JCC
4692	8-14-05	H	ADDED 24 VOLT ALTERNATOR SHOWN.		CS

TOLERANCES (UNLESS OTHERWISE NOTED)		WESTERBEKE CORPORATION AVON MA. 02322	
INCHES	MILLIMETERS	TITLE	
.XX	.02	WIRING DIAGRAM AND SCHEMATIC	
.XXX	.010	8.0, 10.0, 11.0 BTD AND 12.5 BTD	
CAST	.005	DRAWN BY	DATE
ANGLES	.005	APPROVED BY	DATE
FINISH	.005	SCALE	SHEET
DIMENSIONS		DRAWING NUMBER	
INCHES		E	
MILLIMETERS		36412	
(WHEN APPLICABLE)		REV. H	